

Installation Manual

Motorized Roller Screen ER 1/20 with standard guide rails



Please follow these instructions by all means!

For your safeness



- Assembly and electrical installation may only be carried out by qualified personell.
- There are live parts inside of the roller screen box. Therefore make sure that the power supply has been interrupted before opening the roller screen box (switching off the appropriate fuse etc.)
- The connection of the motor may only run in voltage-free condition.
- Make sure that the area beneath the window/door can not be entered during the installation (if necessary, shut off).
- When working under raised parts or working equipment, they must be secured against falling by suitable equipment.
- The insect screen is not qualified as a fall protection.



General information



- Roller screens with radio-controlled motors may not be operated in areas with increased risk of interference (hospitals, airports).
- The product may not be subjected to modifications, additions or alterations.
- Check the parts on proper condition before assembly. Damaged, incomplete or obviously defective parts may not be installed.
- Operation devices like interlocked push buttons or remotes must be installed at a maximum height of 1.3m.



Please read this manual carefully as we do not assume liability for defects resulting from incorrect assembling.
Use only stainless steel screws for mounting.

accessories

mounting material is only included if ordered with mounting holes!



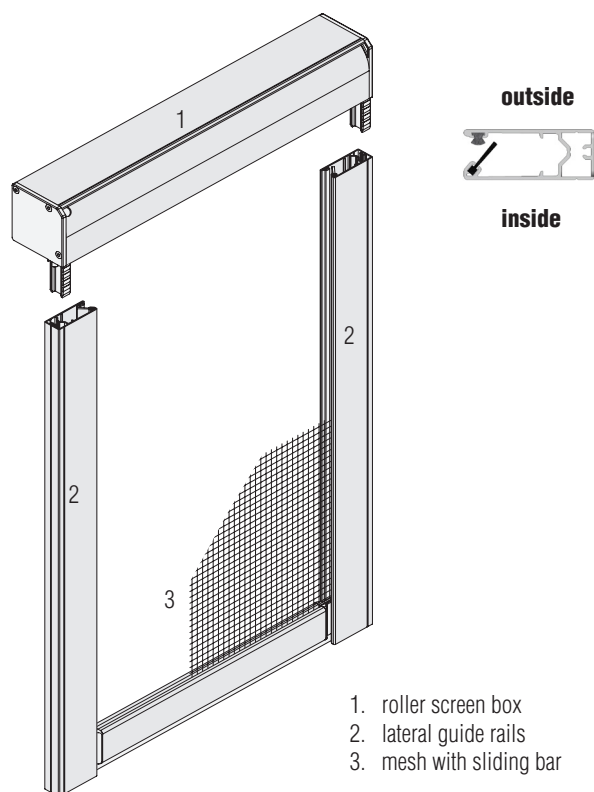
SK 3,9 x 38
15 04 39.38.TX

universal function
dowel
15 50 06.35

recommended tools



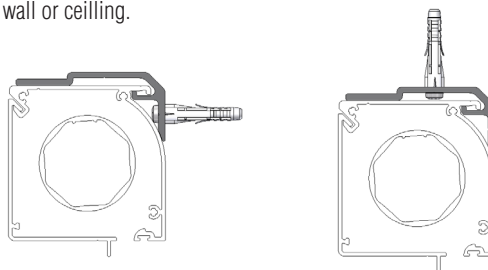
total view



possible assembly modes

Fixture with installation plates

Suitable for mounting on uneven ground. The installation plates can either be fixed to the wall or ceiling.



Self-supporting mounting

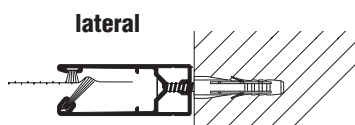
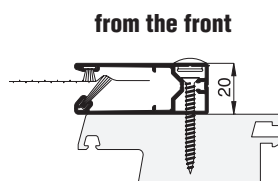
The roller screen box is self-supporting up to a width of 1500mm in connection with the lateral guide rails and does not have to be screwed separately.

Installation Manual

Motorized Roller Screen ER 1/20 **with standard guide rails**

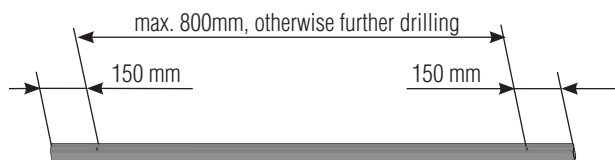


1 Mounting holes for guiding rails (if ordered, continue with step 2)



Example: mounting holes laterally.

- ❶ Remove packing material.
- ❷ Use a 4,5mm drill to drill a hole through the inner drilling groove of the lateral guide rails according to the stated measures.



2.1 Fastening with installation plates

- ❶ Take dimension X and Y from the millings of the roller screen box for the fixation of the installation plates to the masonry.

- ❷ Transfer dimension X and Y to the masonry (ceilling or wall). Pre-drill the ground accordingly and if necessary install the dowel

❗ **Fix installation plates precisely aligned and horizontally to each other!**

- ❸ Screw the installation plates. If necessary adjust with help of the elongated holes.

❗ **Use always two screws per installation plate for their fixation (ceiling or wall)!
Pay attention to the screw head height: max. 3mm!**

👍 **For wall mounting, distance from top edge oder size height to bottom edge installation plate = 25mm.**

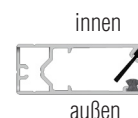
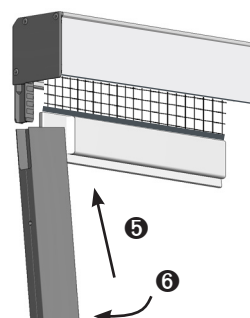
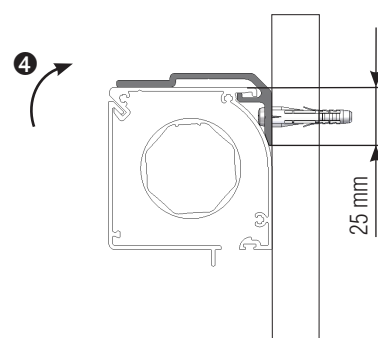
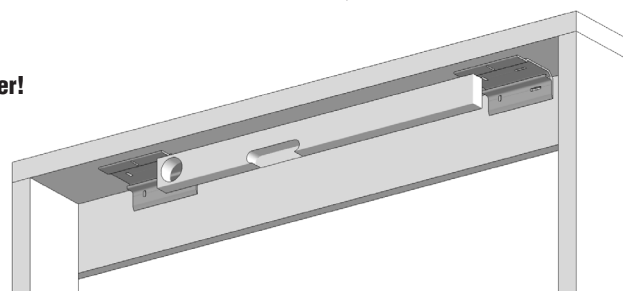
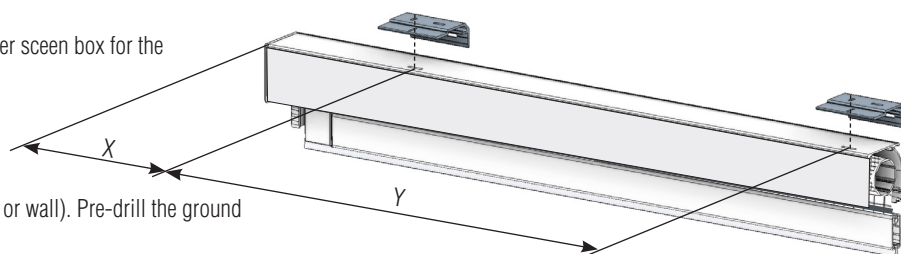
- ❹ Hook the box carefully into the installation plates. Do not reach into the mesh!

👍 **Glue a strip of PE-sealing tape on the backside of the box profile to minimize vibration noises.**

- ❺ Attach the guide rails with the pvc legs of the side caps and upright them towards the wall ❻.

❗ **The mash may not stuck on the guide rails during the attachmen!**

continue with item **3**



Installation Manual

Motorized Roller Screen ER 1/20 **with standard guide rails**



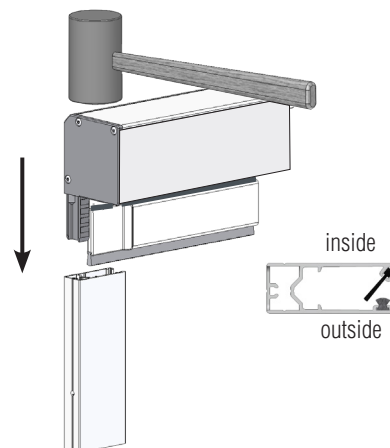
2.2 Self-supporting installation (order size width <1500mm)

! Do not kink the mesh on the weldseam!

Insert sliding bar with mesh into the lateral guide rails and bump the box with the pvc legs of the side caps carefully into the lateral guide rails by using a rubber hammer.

! The mesh may not stuck on the guide rails during the attachment!

continue with item **3**



3 Screwing of the guide rails

! Check requirements for the electrical connection. If necessary carried out by an electrician. The endposition setting with help of the installation cable can only be carried out after the successful installation on the basis of the enclosed installation manual.

1 Align box horizontally and basic profiles vertically to the masonry.

! Use a telescopic measuring rod and a long water level to achieve an accurate alignment.

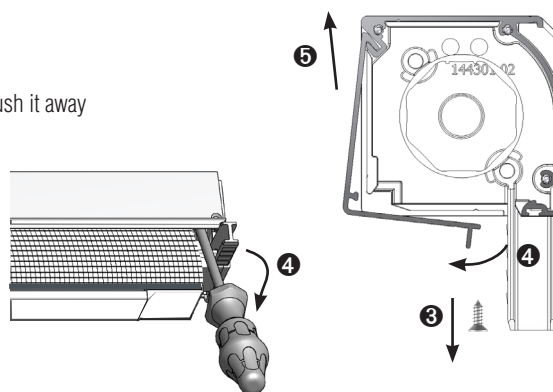
2 Mark the drilling positions with a deep hole marker 17 03 60 and pre-drill with a 6mm masonry drill. Install the dowels and fix it with mounting screws SK 3,9 x 38mm..

! Ensure a parallel alignment of the guide rails! Match the diagonals!

In case of a one-piece faceplate unscrew it on the left and right **3**, unclip it **4**. Push it away upwards **5**, and put it aside carefully.

! Carefully lever up the box faceplate on the left and right by using a screwdriver with isolated blade and unclip it. Do not damage the fabric!

In case of a two-piece faceplate unscrew the lower faceplate on the left and right, fold it away and put it aside carefully.



4 Cable testing and box mounting

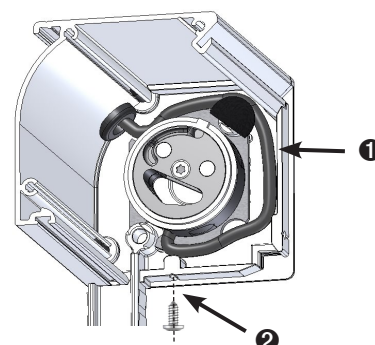
! DANGER - correct position of the motor cable! !

1 Check whether the cable touches the inner surface of the side caps (see drawing). If necessary shorten the cable length by tightening (tight fit).



Danger by electrical shock!

! If the cable is not tightly laid under the motor head, the screw **2 can damage the cable when screwing the box faceplate!**



Installation Manual

Motorized Roller Screen ER 1/20 **with standard guide rails**

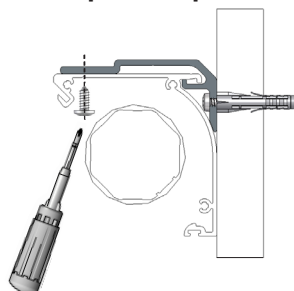


- ③ Switch on fuse and bring the motorized roller screen into service as described in the enclosed instruction.

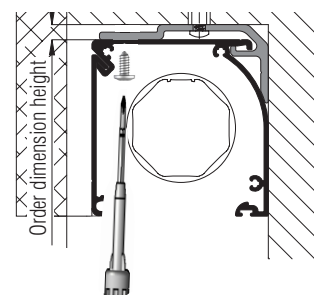
- ④ **For mounting with installation plates** move the sliding bar to the factory-set end position. Use screws RK4,2x9,5mm to fasten the box to the installation plates. Screw through the screw millings from bottom to top.

- ❗ **Use a hand screwdriver. Do not damage the fabric.**

one-piece faceplate



two-piece faceplate



5 Setting of end positions

Set the lower and upper end positions of the sliding bar according to the enclosed adjustment manual.

Insert the faceplate again, hinge it up respectively snap it into place and screw it on the left and right.

6 Selection of operation systems

Select your operating system from the following list. By scanning the QR_code you can see the following videos:

- operation
- wiring diagram for the connection of the motor
- teaching in of the respective operating system
- setting of the end positions

- ① cable controlled **K** motor 230V with pushbutton inside and outside



- ② cable controlled **K** motor 230V with remote operation inside and pushbutton operation outside



- ③ cable controlled **K** motor 230V with Somfy TaHoma Smart Home



- ④ remote controlled **F** motor 230V with remote operation inside and outside



- ⑤ remote controlled **F** motor 230V with remote operation inside and pushbutton operation outside (with automatic closing function) inside and outside



- ⑥ remote controlled **F** motor 230V with KNX-home automation (with automatic closing function)

